

Cascade Village Daybreak

THE TRIO

CRAFTSMAN

2 Car Garage



FARMHOUSE

2 Car Garage



Enter the Trio floorplan and your breath will be taken away by the wide open kitchen, living room, and dining area. The openness truly allows for a terrific living flow of space with thought out designs. Towards the back of the home you'll find a flex room, a great space for a home office, or library, and a 2 car garage. Upstairs a giant loft space for a huge sectional and flat screen tv is located right outside the enormous owner's suite, and owner's bath. You can find two other bedrooms with walk-in closets, and a laundry room. If you decide to finish the large basement, you will gain two additional bedrooms, and extra bathroom and a huge recreation room. Total square footage of this floorplan is 3,120 and finished is 2,201.



*Home sq. ft. are approximate and are subject to change. Fieldstone Homes reserves the right to change or withdraw floor plans and features without notice. Artistic renderings represent the general appearance of the design and are not meant to be an exact rendition. Floor lines are artistic..

FieldStone
HOMES

THE TRIO FLOORPLAN

3,120 Total Sq Ft

2,201 Finished Sq Ft

1,137 Main Sq Ft

1,064 Upper Sq Ft

919 Basement Sq Ft

3 - 5 Bedrooms

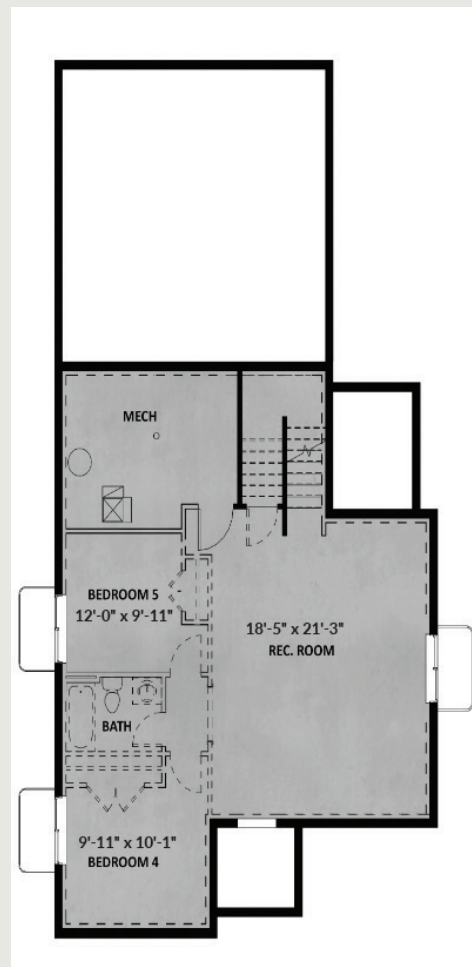
2.5 - 3.5 Bathrooms



MAIN FLOOR



UPPER FLOOR



UNFINISHED BASEMENT