

*Cascade Village Daybreak*

# THE BRIGHTON

## CRAFTSMAN

*2 Car Garage*



## FARMHOUSE

*2 Car Garage*



With an open-concept and modern style, the two-story Brighton floor plan features 3 bedrooms, with an optional 4th bedroom in the basement, 2.5 bathrooms, 1,872 finished square feet, and 2,753 total square feet. Exterior details, finishes and colors are handpicked by a renowned national designer. The Brighton plan features an open living room right off the entryway of the first floor. The main living space includes a cozy dining space and beautiful kitchen with a spacious island and walk-in pantry. Next to the kitchen you'll find a powder bath and an awesome flex room; the perfect area for your work from home office, or even a gym. You can relax and enjoy a private owner's suite with a spacious bedroom, walk-in closets, and a spa-like bathroom with a walk-in shower. Upstairs, your family and guests will always be comfortable with a cozy bathroom and laundry room. The two additional upstairs bedrooms have large, walk-in closets. If you want even more space, you have the option to finish your basement with 1 bedroom, bathroom, and a large open recreation area. Transform your recreation room into a movie lounge, children's playroom, or home office. The covered outdoors patio is perfect for entertaining friends or enjoying quiet time.



\*Home sq. ft. are approximate and are subject to change. Fieldstone Homes reserves the right to change or withdraw floor plans and features without notice. Artistic renderings represent the general appearance of the design and are not meant to be an exact rendition. Floor lines are artistic..

**FieldStone**  
HOMES

# THE BRIGHTON FLOORPLAN

2,753 Total Sq Ft

1,872 Finished Sq Ft

1,016 Main Sq Ft

856 Upper Sq Ft

881 Basement Sq Ft

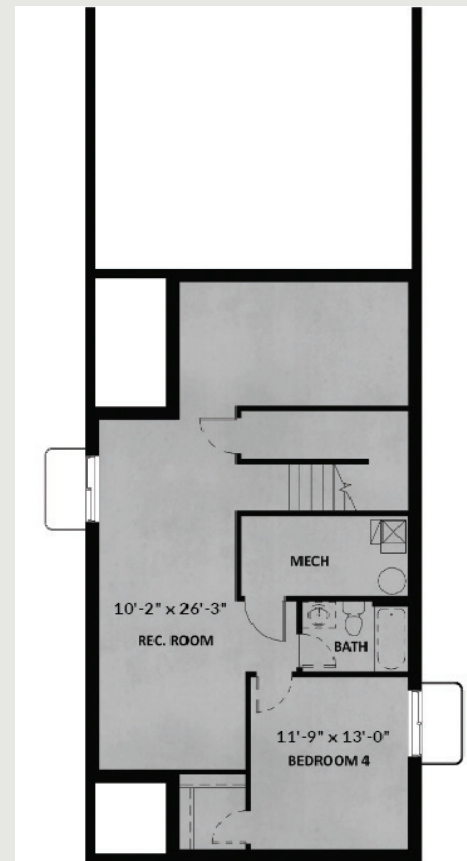
3 - 4 Bedrooms

2.5 - 3.5 Bathrooms

MAIN FLOOR



UPPER FLOOR



UNFINISHED BASEMENT