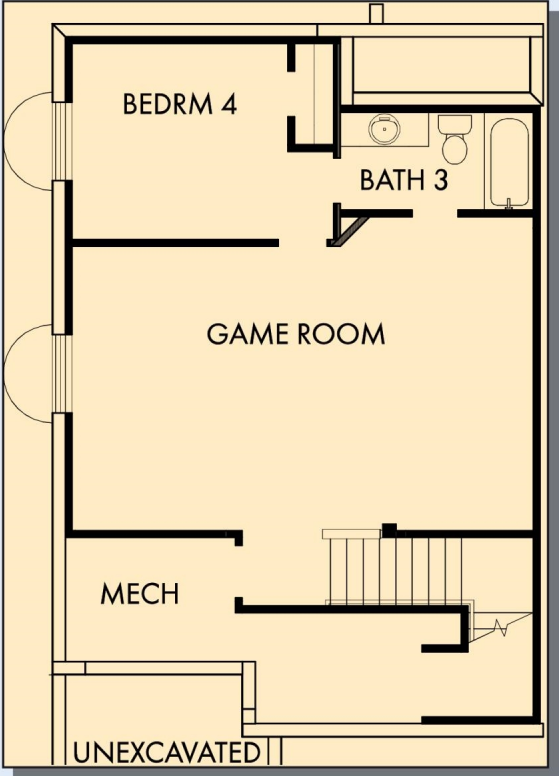
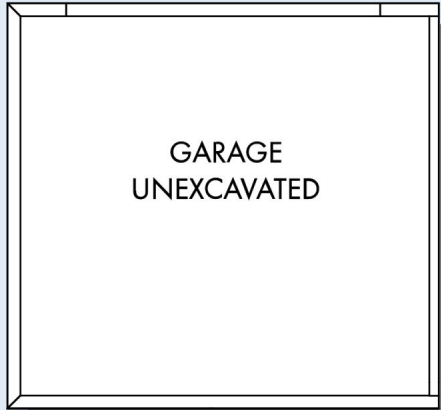
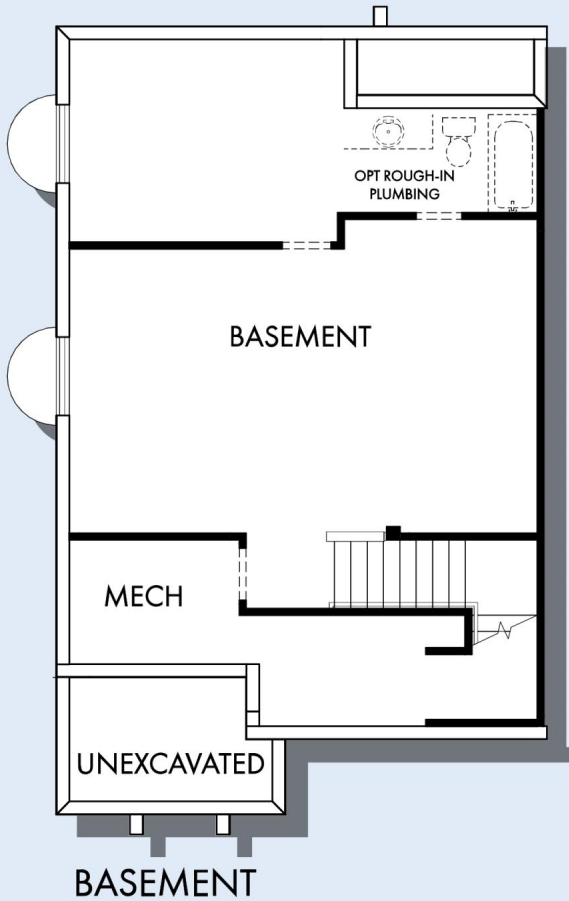


THE TULIP



OPTIONAL GAME ROOM WITH BEDROOM 4 AND BATH 3 AT BASEMENT



For additional options, please visit DavidWeekleyHomes.com

DavidWeekleyHomes.com

THE TULIP



Exterior A

1,772 sq. ft.

3 - 4 Bedrooms

2 - 3 Full Baths

1 Half Bath

2 Car Garage



Exterior B



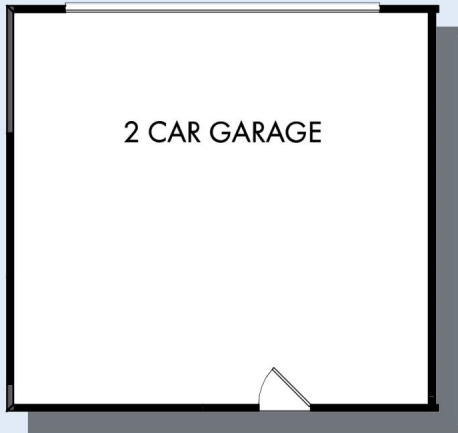
Exterior C

David Weekley
Homes

See a David Weekley Homes Sales Consultant for details. Prices, plans, dimensions, features, specifications, materials, and availability of homes or communities are subject to change without notice or obligation. Illustrations are artist's depictions only and may differ from completed improvements. Copyright © 2021 David Weekley Homes - All Rights Reserved. Salt Lake City, UT

THE TULIP

1,772 sq. ft. • 3 - 4 Bedrooms • 2 - 3 Full Baths • 1 Half Bath • 2 Car Garage



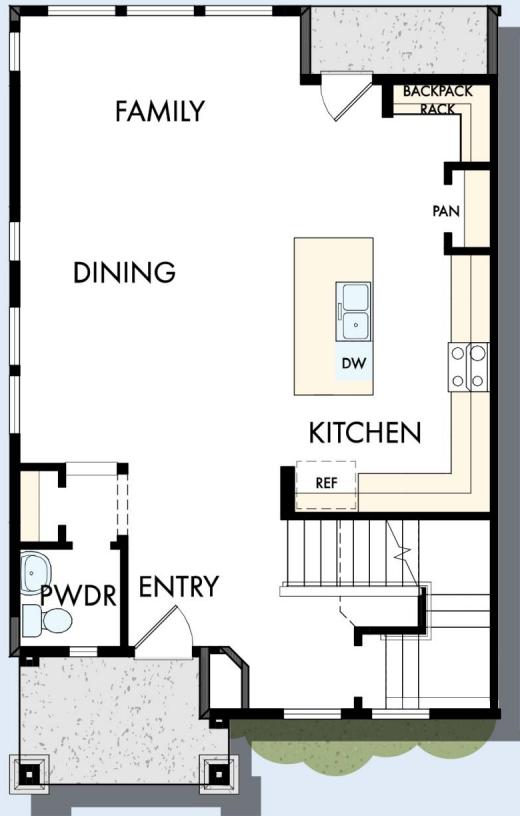
OPTIONAL OUTDOOR LIVING



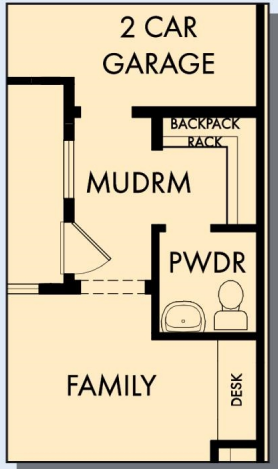
OPTIONAL RETREAT AT BEDROOM 3



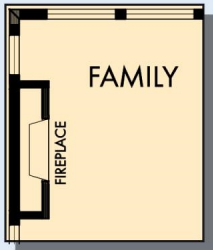
OPTIONAL DROP IN TUB WITH SEPARATE SHOWER AT OWNER'S BATH



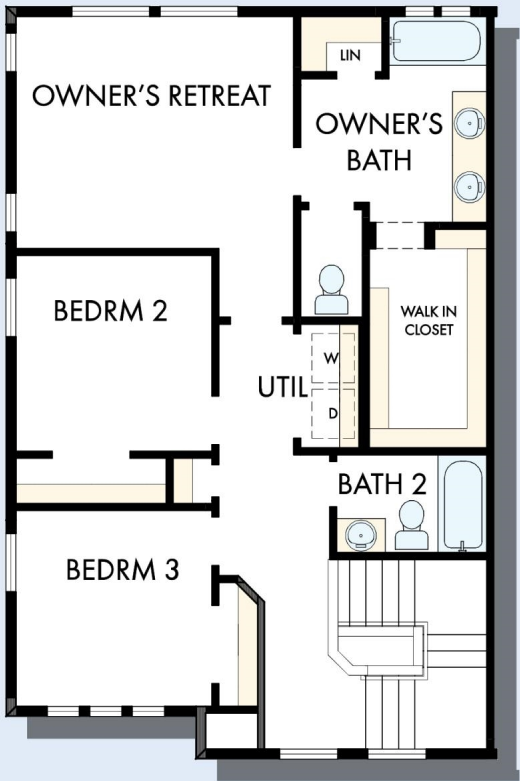
FIRST FLOOR



OPTIONAL MUDROOM



OPTIONAL WALL FIREPLACE AT FAMILY



SECOND FLOOR